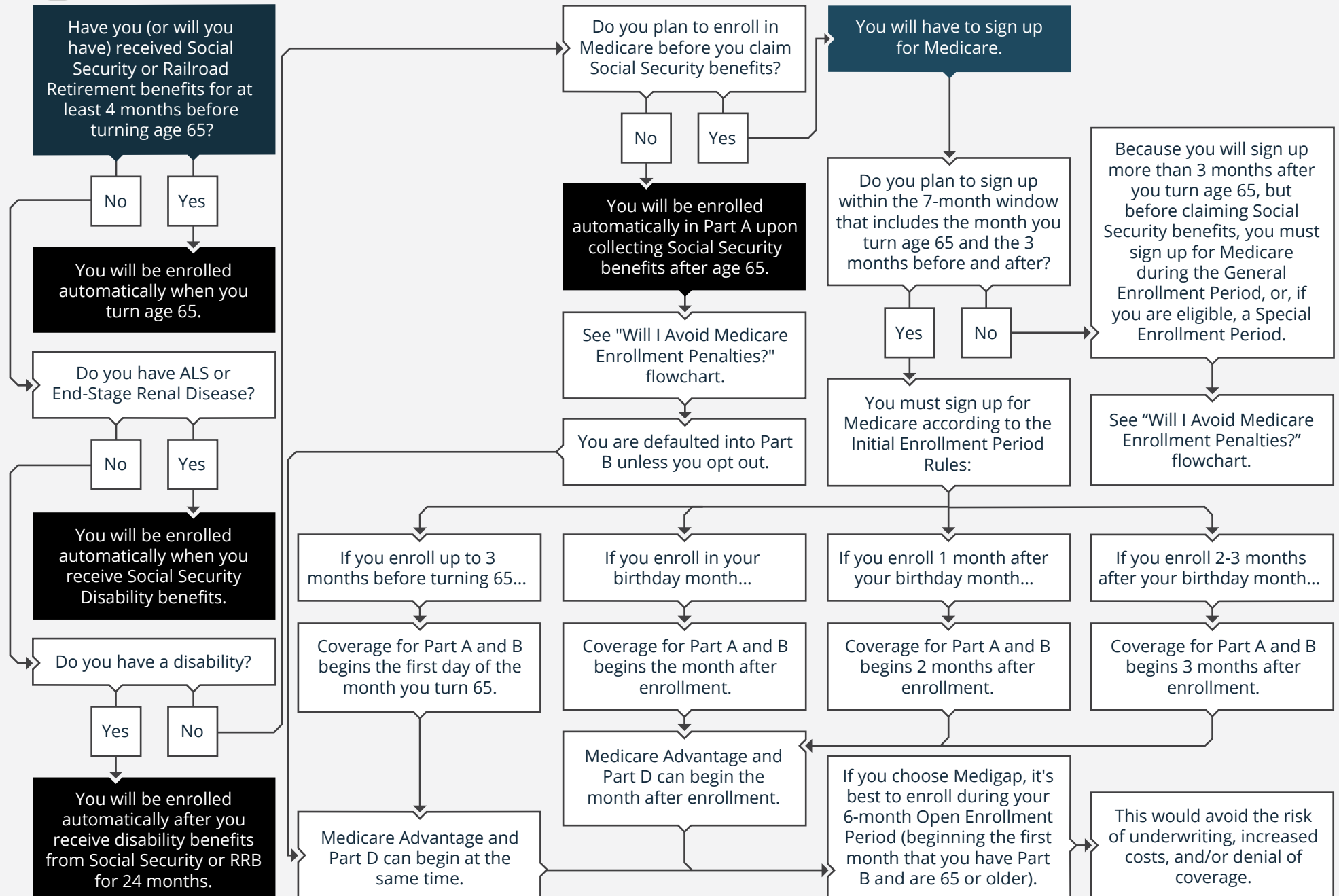


# 2022 · WILL I BE ENROLLED AUTOMATICALLY IN MEDICARE?

 **Start Here**



## IMPORTANT DISCLOSURE INFORMATION

Past performance may not be indicative of future results. Different types of investments involve varying degrees of risk. Therefore, it should not be assumed that future performance of any specific investment or investment strategy (including the investments and/or investment strategies recommended and/or undertaken by Evensky & Katz / Foldes Financial Wealth Management), or any non-investment related content, will be profitable, equal any corresponding indicated historical performance level(s), be suitable for your portfolio or individual situation, or prove successful. Evensky & Katz / Foldes Financial Wealth Management is neither a law firm nor accounting firm, and no portion of its services should be construed as legal or accounting advice. Please remember that it remains your responsibility to advise Evensky & Katz / Foldes Financial Wealth Management, in writing, if there are any changes in your personal/financial situation or investment objectives for the purpose of reviewing/evaluating/revising our previous recommendations and/or services, or if you would like to impose, add, or to modify any reasonable restrictions to our investment advisory services. A copy of our current written disclosure statement discussing our advisory services and fees is available upon request. The scope of the services to be provided depends upon the terms of the engagement.

Please Note: Rankings and/or recognition by unaffiliated rating services and/or publications should not be construed by a client or prospective client as a guarantee that he/she will experience a certain level of results if Evensky & Katz / Foldes Financial Wealth Management is engaged, or continues to be engaged, to provide investment advisory services, nor should it be construed as a current or past endorsement of Evensky & Katz / Foldes Financial Wealth Management by any of its clients. Rankings published by magazines, and others, generally base their selections exclusively on information prepared and/or submitted by the recognized adviser. Rankings are generally limited to participating advisers.

1-800-448-5435 | [Evensky.com](http://Evensky.com)

